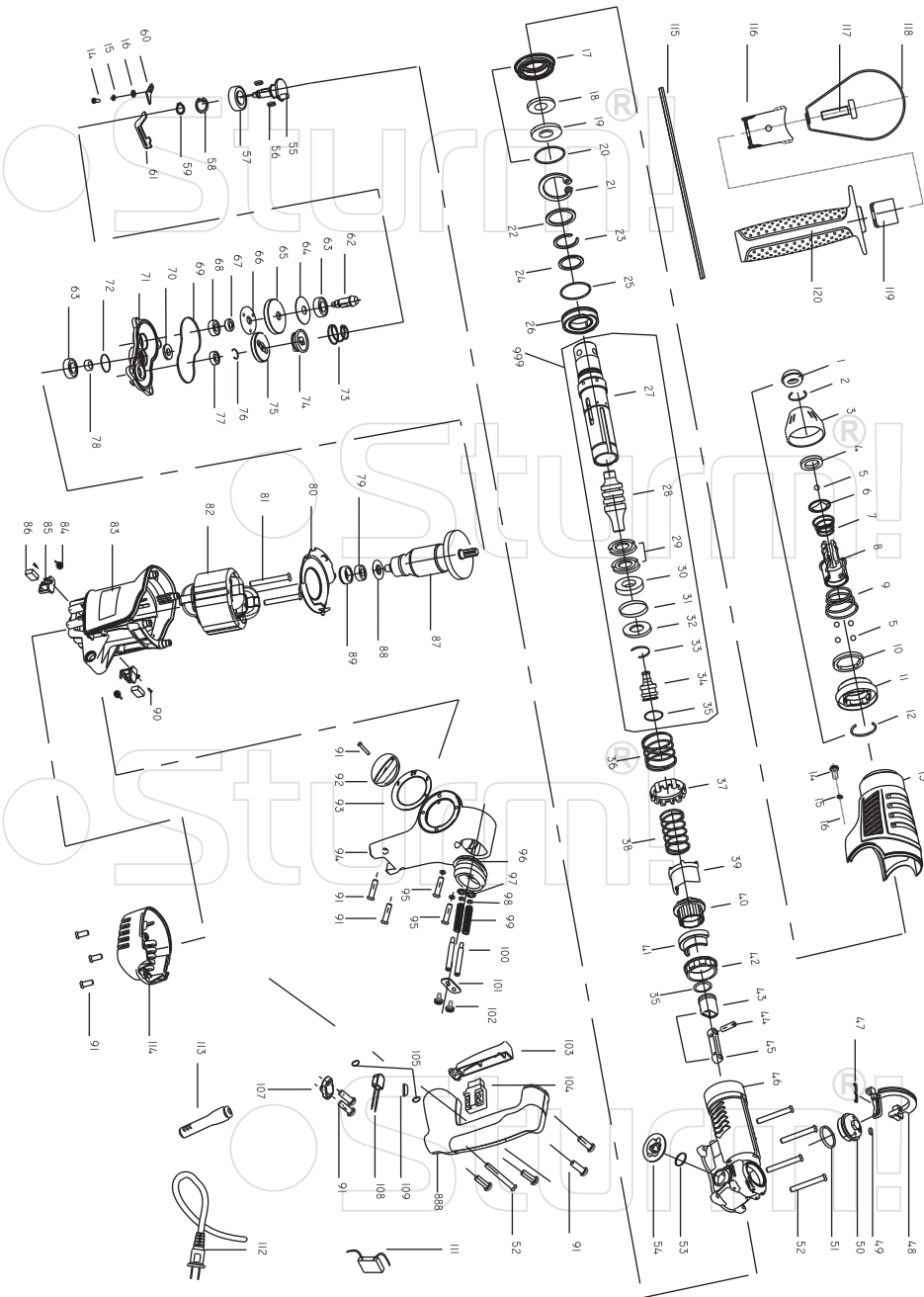


RH2511P



NO.	DESCRIPTION	NO.	DESCRIPTION
1	DUST CAP	61	PLECTRUM
2	SNAP RING FOR FRONT CONTROL SLEEVE Ø18.5XØ2	62	TAPER GEAR SHAFT
3	PLASTIC SLEEVE	63	SINGLE-ROW RADIAL BALL BEARING 6001-2RS
4	FRONT CONTROL STEEL RING	64	WING OF SPRING
5	STEEL BALL Ø7	65	BIG GEAR
6	CONTROL RING	66	CLUTCH DISC
7	FRONT COIL SPRING	67	SPECIAL NUT
8	CONNECTING SLEEVE	68	SINGLE-ROW RADIAL BALL BEARING 627-2Z
9	REAR COIL SPRING	69	ALIEN SEAL RING
10	REAR CONTROL STEEL RING	70	OIL SEAL FOR INTERMEDIATE COVER
11	REAR CONTROL SET	71	INTERMEDIATE COVER
12	SNAP RING FOR REAR CONTROL SLEEVE Ø31XØ2.5	72	O-RING FOR INTERMEDIATE COVER Ø28XØ2
13	GEAR CASE SHELL	73	SPRING FOR PLUG BUSH
14	PAN HEAD SCREW M4X10	74	PLUG BUSH
15	SPRING WASHERØ4	75	ECCENTRIC SHAFT GEAR
16	FLAT PLATE Ø4	76	ROUND WIRE SNAP SING Ø9
17	BLOCK COVER	77	SINGLE-ROW RADIAL BALL BEARING 607-2Z
18	WOOL CIRCLE	78	OIL PREVENTION WASHER
19	OIL SEAL FORBLOCK COVER	79	SINGLE-ROW RADIAL BALL BEARING 608-2RS
20	O-RING FOR BLOCK COVER Ø48XØ3.6	80	FAN GUIDE
21	CIRCILP FOR HOLE Ø52	81	TAPPING SCREW ST4.8X55
22	CATCH FOR FRONT OIL IMPREGING BEARING	82	STATOR
23	SNAP RING FOR FRONT OIL IMPREGING BEARING	83	HOUSING
24	WASHER FOR FRONT OIL IMPREGING BEARING	84	CARBON HOLDER
25	O-RING FOR FRONT OIL IMPREGING BEARING Ø45XØ3.5	85	BRUSH HOLDER
26	FRONT OIL IMPREGING BEARING	86	CARBON BRUSH
27	TELEFLEX	87	ARMATURE
28	PERCUSSION HAMMER	88	INSULATING RING
29	X-RING FOR PERCUSSION HAMMER	89	BEARING BUSH
30	SPACER	90	TAPPING SCREW ST2.9X9.5
31	O-RING FOR SPACER Ø11.5XØ4.5	91	TAPPING SCREW ST4.2X16
32	WASHER FOR SPACER	92	OUTER KNOB
33	SNAP RING FOR SPACER	93	GEAR SHIFT PLATE
34	IMPACT PISTON	94	REAR COVER
35	O-RING FOR PISTON Ø19XØ3.5	95	PAN HEAD SCREW M4X12
36	SPRING FOR STOP RING	96	EXTENSION TUBE
37	STOPER RING	97	BUFFER SPACER
38	SPRING FOR CLUTCH SLIDE BUSHING	98	SPRING WASHERØ5
39	EXTENDED BUSHING	99	HANDLE SPRING
40	CLUTCH SLIDE BUSHING	100	THREADED ROD
41	BIG BEVEL GEAR	101	SPRING BINDER
42	REAR OIL BEARING	102	BIG HEAD SCREW
43	AIR PISTON	103	SWITCH TRIGGER
44	PISTON PIN	104	SWITCH
45	CONNECTING LEVER	105	O-RING FOR HANDLE Ø12XØ2.5
46	GEAR CASE	107	CORD BINDER
47	POSITIONING SPRING LAMINATION	108	LED LIGHT
48	FIXED MOUNT	109	LED LIGHT CAP
49	FELTED WOOL	111	CAPACITOR
50	OIL CAP	112	CORD&PLUG
51	O-RING FOR OIL CAP Ø29XØ2.3	113	CORD ARMOR
52	TAPPING SCREW ST4.8X30	114	BOTTOM COVER
53	O-RING FOR KNOB Ø16XØ2	115	LIMITED ROD
54	INNER KNOB	116	HANDLE BRACKET
55	ECCENTRIC SHAFT	117	HEX HEAD SCREW M8X50
56	PLAIN KEY 4X4X12	118	CLAMP
57	SINGLE-ROW RADIAL BALL BEARING 6003-2RS	119	GRIP HOLDER
58	CIRCILP FOR HOLE Ø35	120	HELP HANDLE
59	CIRCILP FOR SHAFT Ø17	888	HANDLE ASSEMBLY
60	COUNTERVANE	999	CYLINDER ASSEMBLY