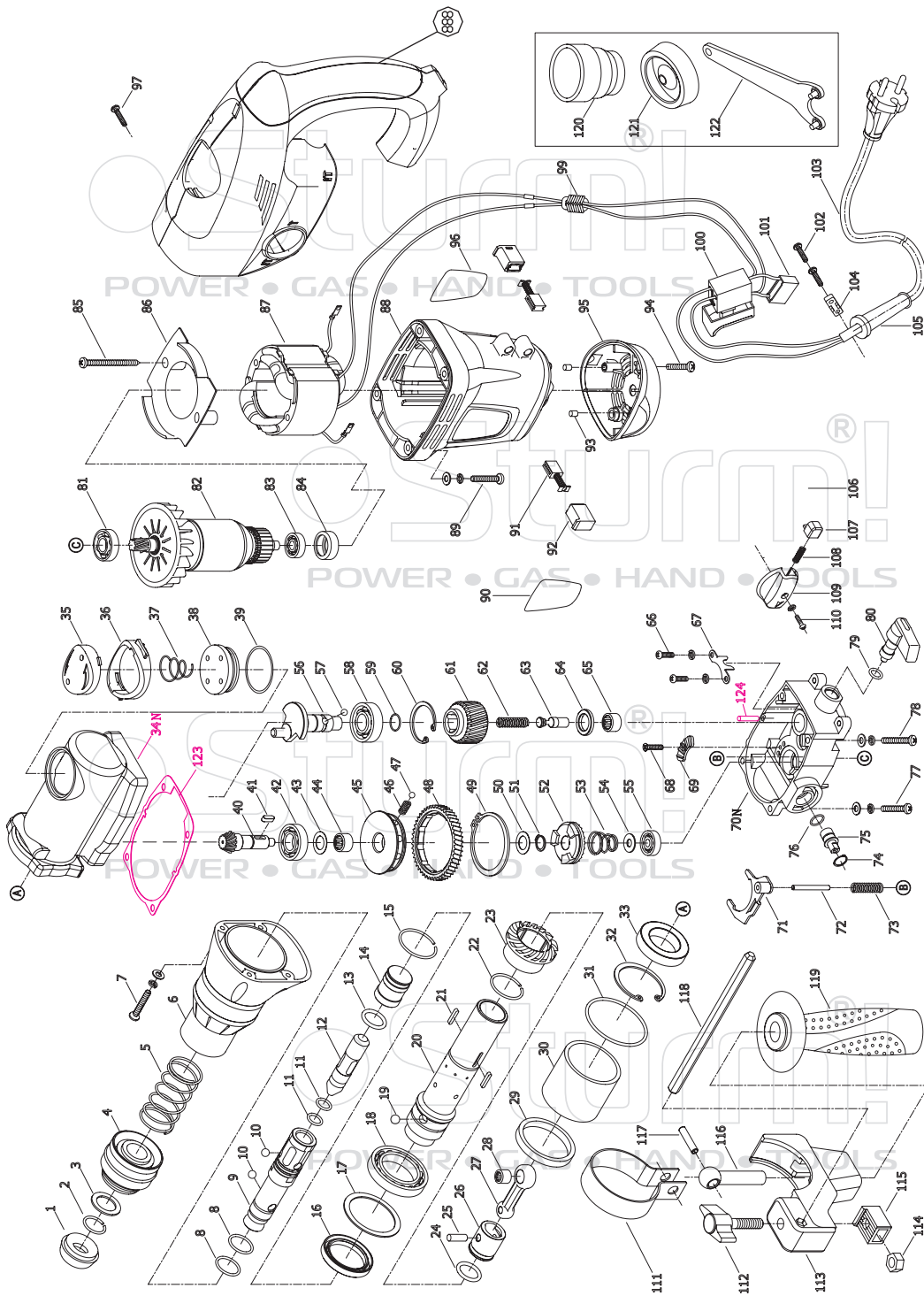


RH2517



NO.	DESCRIPTION	NO.	DESCRIPTION	NO.	DESCRIPTION
1	FRONT COVER	42	BEARING 6002	83	BEARING 608
2	AXILE CIRCLIP	43	WASHER	84	BEARING BUSH
3	WASHER	44	NEEDLE BEARING HK1210	85	TAPPING SCREW
4	SLIDER	45	WHEEL CORE	86	AIR BAFFLE
5	SPRING	46	SPRING	87	STATOR
6	CYLINDER CASE	47	STEEL BALL	88	MOTOR HOUSING
7	BOLT	48	SECOND GEAR	89	HEX SCREW+WASHER
8	O-RING	49	AXILE CIRCLIP	90	BRAND
9	GUARD RING SLEEVE	50	WASHER	91	CARBON BRUSH
10	STEEL BALL	51	AXILE CIRCLIP	92	BRUSH HOLDER
11	O-RING	52	CLUTCH	93	RUBBER PIN
12	SECOND STRIKER	53	DISH SPRING	94	TAPPING SCREW
13	O-RING	54	WASHER	95	REAR COVER
14	RAM	55	BEARING 627	96	LABEL
15	CIRCLIP	56	CRANK SHAFT	97	TAPPING SCREW
16	OIL SEAL	57	STEEL BALL	99	INDUCTOR
17	BIG WASHER	58	BEARING 6202	100	SWITCH
18	BEARING 61907	59	AXILE CIRCLIP	101	CAPACITOR
19	STEEL BALL	60	CIRCLIP	102	TAPPING SCREW
20	CYLINDER	61	FIRST-GEAR	103	CORD & PLUG
21	PIN	62	SPRING	104	CORD CLAMP
22	AXILE CIRCLIP	63	CLUTCH SHAFT	105	CORD SLEEVE
23	BIG BEVEL GEAR	64	CLUTCH FRICTION RING	107	LOCK BLOCK
24	O-RING	65	NEEDLE BEARING HK1210	108	SPRING
25	PISTON PIN	66	SCREW+WASHER	109	KNOB
26	PISTON	67	FIXING PLATE	110	SCREW+WASHER
27	CONNECTING ROD	68	SUNK SCREW	111	LOCKING RING
28	NEEDLE BEARING HK0810	69	LOCKING PLATE	112	FIXING SCREW
29	RUBBER RING	70N	GEAR BOX	113	SIDE HANDLE GRIP
30	WASHER SLEEVE	71	FORK	114	NUT
31	O-RING	72	PIN	115	DEPTH GAUGE LOCK
32	CIRCLIP	73	SPRING	116	MOVING BOLT
33	OILY BEARING	74	CIRCLIP	117	SPRING COLUMN PIN
34N	CRANK SHAFT CASE	75	SIDE KNOB SHAFT	118	DEPTH GAUGE
35	OUTER OIL COVER	76	O-RING	119	SIDE HANDLE
36	OIL COVER SLEEVE	77	SCREW	120	OIL BOX
37	DISH SPRING	78	SCREW	121	DUST CAP
38	OIL COVER	79	O-RING	122	SPECIAL SPANNER
39	O-RING	80	SWITCH GRIP	123	PAPER CUSHION
40	THIRD SHAFT GEAR	81	BEARING 6001	124	PIN B4X16
41	PIN	82	ROTOR	888	HANDLE ASSEMBLE