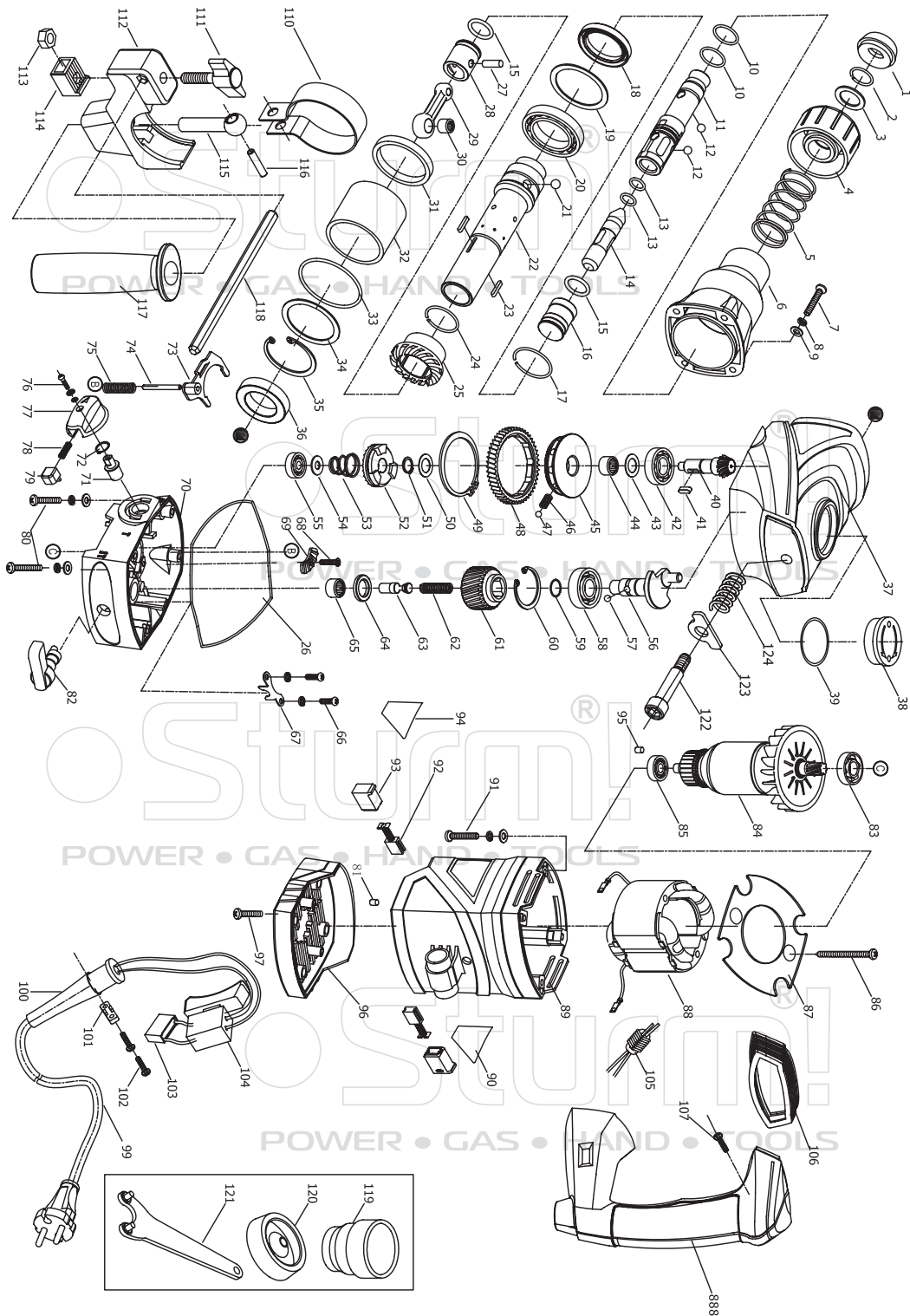


RH2518



NO.	DESCRIPTION	NO.	DESCRIPTION	NO.	DESCRIPTION
1	FRONT COVER	42	BEARING 6002	83	BEARING 6001
2	CIRCLIP Ø19	43	WASHER	84	ROTOR
3	WASHER Ø28×Ø19×1.5	44	NEEDLE BEARING HK1210	85	BEARING 608
4	SLIDER	45	CORE	87	AIR GUIDER
5	SPRING	46	SPRING	88	STATOR
6	CYLINDER CASE	47	STEEL BALL Ø5.5	89	MOTOR HOUSING
7	BOLT M5X20	48	SECOND GEAR	90	LABEL
8	SPRING WASHER Ø5	49	CIRCLIP Ø52	91	SCREW M5X25
9	FLAT WASHER Ø5	50	WASHER	92	CARBON BRUSHES
10	O RING 24X2	51	CIRCLIP Ø12	93	BRUSH HOLDERS
11	GUARD RING SLEEVE	52	CLUTCH	94	LABEL
12	STEEL BALL Ø7.14	53	DISC SPRING	95	RUBBER NAIL
13	O RING 15X2	54	WASHER	96	BOTTOM COVER
14	SECOND STRIKER	55	BEARING 627	97	TAP SCREW ST4.2X19
15	O RING 24X3	56	CRANK SHAFT	99	CORD
16	RAM	57	STEEL BALL Ø5.5	100	CORD SHEATH
17	CIRCLIP 35X2	58	BEARING 6202	101	CORD CLAMP
18	GREASE SEAL	59	CIRCLIP 15X1	102	TAP SCREW ST3.9X12
19	BIG WASHER	60	CIRCLIP Ø35	103	CAPACITANCE
20	BEARING 61907	61	FIRST GEAR	104	SWITCH
21	STEEL BALL Ø7.94	62	SPRING	105	INDUCTANCE
22	CYLINDER	63	SHORE	106	ANTI-VIBRATION RING
23	PIN 3X18	64	WEARING RING	107	TAP SCREW ST4X16
24	CIRCLIP 30X2	65	NEEDLE BEARING HK1210	110	COLLAR
25	BIG BEVEL GEAR	66	SCREW M4X8	111	PLASTIC CAP SCREW
26	SEAL STRIP	67	LOCK PLATE	112	HANDLE CLAMP
27	PISTON PIN	68	SCREW M4X8	113	NUT M6
28	PISTON	69	STOP PLATE	114	DEPTH GAUGE CLAMP
29	CONNECTING ROD	70	GEAR CASE	115	BOLT
30	NEEDLE BEARING HK0810	71	ECCENTRIC SHAFT	116	STRAIGHT PIN Ø6X20
31	RUBBER RING	72	CIRCLIP Ø15	117	AUXILIARY HANDLE
32	BUSING BLOCK	73	STRIKING FORK	118	DEPTH GAUGE
33	O RING 60.5X2.5	74	PIN Ø4X40	119	GREASE POT
34	LOCATING WASHER	75	SPRING	120	DUST CAP
35	CIRCLIP Ø47	76	SCREW M3X15	121	SPANNER
36	OIL BEARING	77	KNOB	122	ANTI-VIBRATION BOLT
37	CRANK SHAFT CASE	78	KNOB SPRING	123	ANTI-VIBRATION WASHER
38	GREASE COVER	79	LOCATING PIECE	124	ANTI-VIBRATION SPRING
39	O RING 38X2	80	SCREW M5×25	888	HANDLE ASSEMBLE
40	SMALL BEVEL GEAR	81	SCREW M5×20		
41	PIN 4X12	82	SWITCH KNOB		

ST20101220