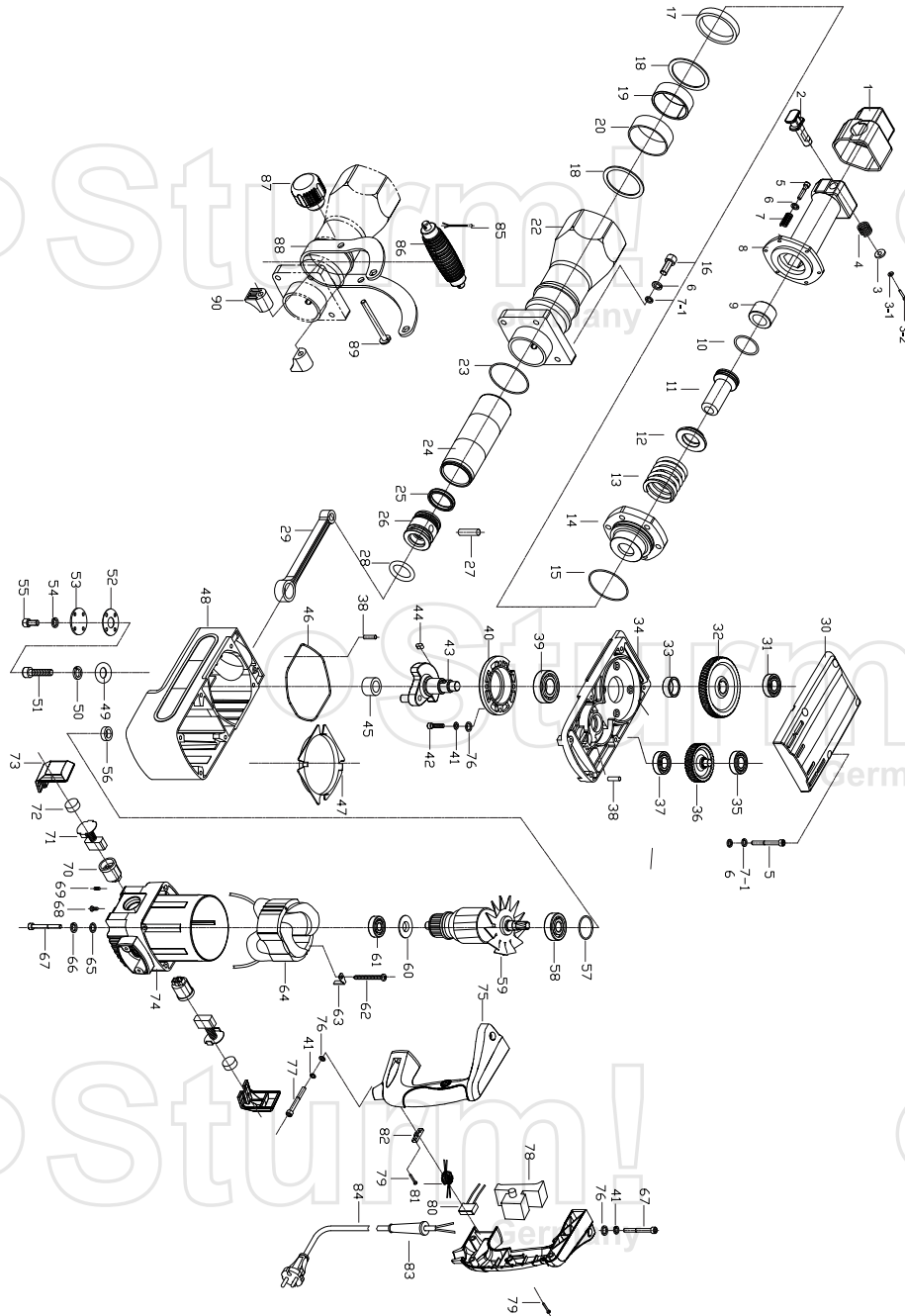


RH2519



NO.	DESCRIPTION	NO.	DESCRIPTION
1	DUST CAP	48	CRANK SHAFT CASE
2	CLAMP STOPPER PIN	49	WASHER
3	WASHER	50	SPRING WASHER Ø8
4	SPRING	51	HEX SOCKET HEAD CAP SCREW M8*25
5	HEX SOCKET HEAD CAP SCREW M8*65	52	OIL HOLE PAPER GASKET
6	WASHER Ø8	53	OIL COVER
7	SPRING	54	SPRING WASHER Ø5
8	GRIP SLIPPER	55	HEX SOCKET HEAD CAP SCREW M5*12
9	GUIDE RING	56	ANTI-OIL RING
10	O-RING	57	O-RING
11	SECOND RAM	58	BEARING 6202
12	SPRING SOCKET	59	ROTOR
13	SPRING	60	INSULATION RING
14	FIXATION BUSH	61	BEARING 6201
15	O-RING	62	TAPPING SCREW ST4.8*60
16	HEX SOCKET HEAD CAP SCREW M8*40	63	STATOR CLAMP PLATE
17	SYNTHETIC RUBBER RING	64	STATOR
18	GASKET	65	FLAT WASHER Ø6
19	SPACING RING	66	SPRING WASHER Ø6
20	RUBBER BUSH	67	HEX SOCKET HEAD CAP SCREW M6*55
22	CYLINDER CASE	68	TAPPING SCREW ST4.2*12
23	O-RING	69	SET SCREW M5*10
24	BLOCK STAMP	70	BRUSH HOLDER
25	SEAL RING	71	BRUSH
26	PISTON	72	BRUSH COVER
27	PISTON PIN	73	DECORATION COVER
28	O-RING	74	MOTOR CASING
29	CONNECTING ROD	75	HANDLE GRIP
30	GEAR CASE COVER	76	FLAT WASHER Ø6
31	BEARING 6302	77	HEX SOCKET HEAD CAP SCREW M6*35
32	BULL GEAR	78	SWITCH
33	SPACING TUBE	79	TAPPING SCREW ST4.2*16
34	REDUCTION BOX	80	CAPACITANCE
35	BEARING 6201	81	INDUCTANCE
36	IDLER GEAR	82	CORD CLAMP
37	BEARING 6001	83	CORD SHEATH
38	PIN B6*12	84	POWER CORD
39	BEARING 6205	85	COTTER PIN Ø2.5
40	BEARING CAP	86	AUXILIARY HANDHOLD
41	SPRING WASHER Ø6	87	KNOB
42	HEX SOCKET HEAD CAP SCREW M6*25	88	HOLDING RACK
43	CRANK SHAFT	89	GRIP BOLT
44	FLAT PIN 6*12	90	HOLDING BLOCK
45	NEEDLE BEARING NK1716	7-1	SPRING WASHER Ø8
46	SEAL RING	3-1	SPRING WASHER Ø6
47	AIR BAFFLE RING	3-2	SCREW M6X15

RU5102202

Germany