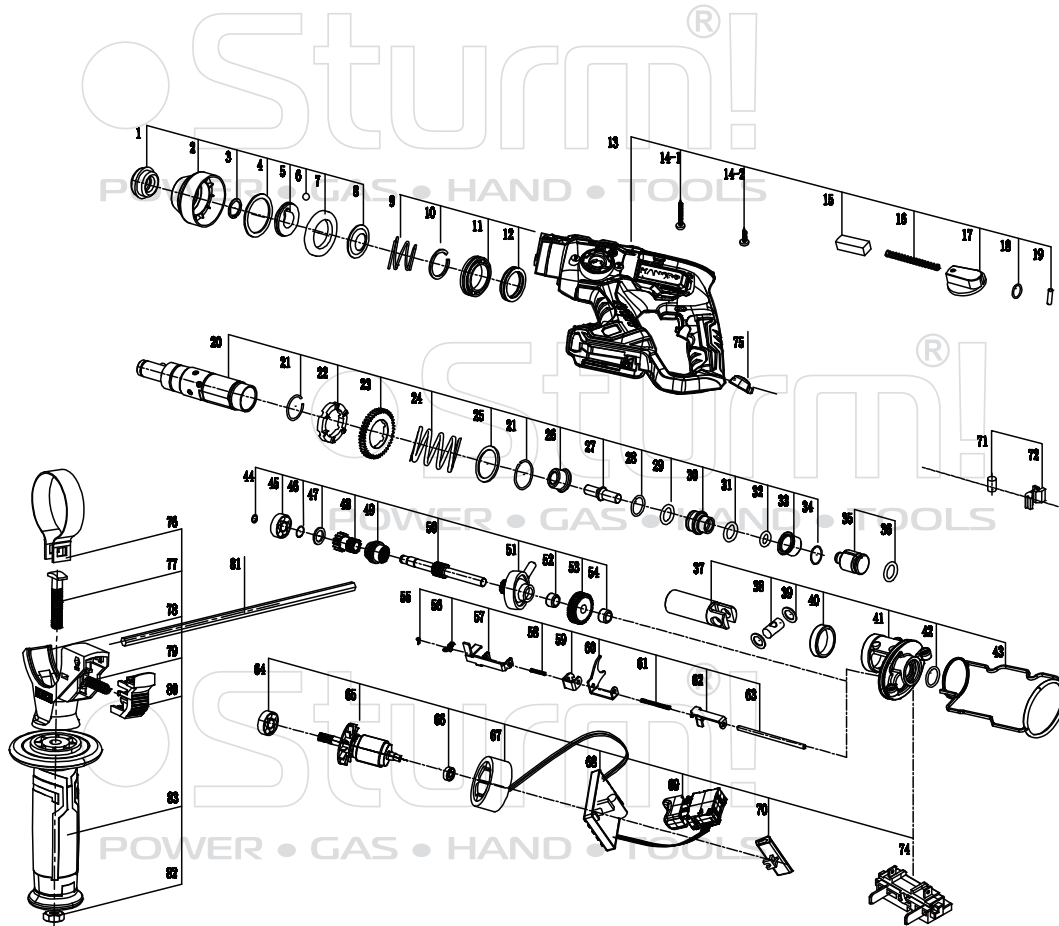


# RH2520CLB



NO.	DESCRIPTION	NO.	DESCRIPTION
1	DUSTPROOF CAP	42	O-RING
2	PROTECTION SLEEVE	43	SEALING RING
3	CIRCLIP $\Phi 14.8$	44	CIRCLIP $\Phi 7$
4	WASHER $\Phi 24.8 \times \Phi 30.6 \times 1$	45	BEARING 627RS
5	PROTECTION SLEEVE WASHER	46	CIRCLIP $\Phi 8$
6	STEEL BALL $\Phi 7.1$	47	MIDDLE GEAR WASHER
7	WASHER	48	MIDDLE GEAR
8	SPRING SEAT	49	CLUTCH DISK 2
9	SPRING	50	MIDDLE SHAFT
10	CIRCLIP $\Phi 25$	51	ROCKER BEARING
11	BEARING 6805RS	52	NEEDLE BEARING HK081117
12	OIL SEAL	53	BEVEL GEAR
13	HOUSING	54	NEEDLE BEARING HK0808
14-1	SCREW ST4X24	55	SCREW ST3X14
14-2	SCREW ST4X16	56	PRESS PLATE
15	LOCKING BUTTON	57	SHIFTING GEAR UNIT 1
16	SPRING	58	SPRING
17	SELECTOR KNOB	59	SHIFTING GEAR UNIT 2
18	O-RING	60	SHIFTING GEAR UNIT 3
19	PIN OF KNOB	61	SPRING
20	ROTARY SLEEVE	62	SHIFTING GEAR UNIT 4
21	CIRCLIP $\Phi 1.6 \times 28$	63	FUNCTION SWITCHING SHAFT
22	CLUTCH DISK 1	64	BEARING 608RZ
23	BIG GEAR	65	ROTOR
24	SPRING	66	BEARING 626Z
25	WASHER $\Phi 10.3 \times \Phi 49 \times 1$	67	STATOR
26	HAMMER ROD FIXED SLEEVE	68	MOTOR PCB
27	HAMMER ROD	69	SWITCH
28	O-RING	70	PUSH ROD
29	O-RING	71	SHOCK ABSORBER PAD
30	GUIDE BUSHING	72	FIXED BLOCK
31	O-RING	74	BATTERY PACK CONNECTOR
32	O-RING	75	LAMP COVER
33	FIXED SLEEVE	76	CLAMPING BAND
34	CIRCLIP $\Phi 1.6 \times 24.2$	77	T-BOLT
35	PISTON	78	CLAMP HOLDER
36	O-RING	79	SPRING
37	CYLINDER	80	DEPTH RULER LOCK
38	CYLINDER PIN	81	DEPTH RULER
39	CYLINDER PIN WASHER	82	NUT M8
40	BUSHING	83	AUXILIARY HANDLE
41	BRACKET		