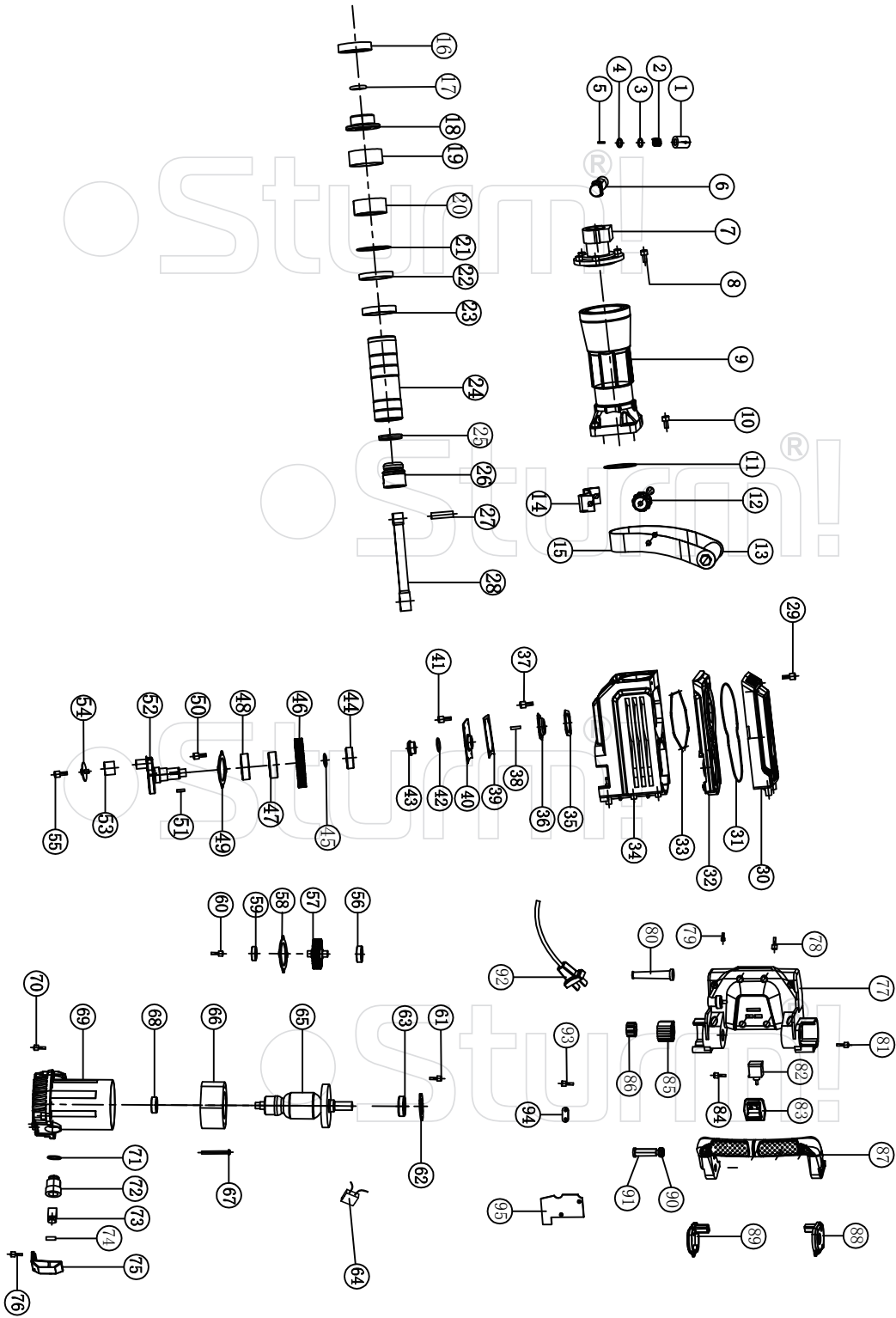


RH2521P



NO.	DESCRIPTION	NO.	DESCRIPTION
1	SLEEVE-NOSE PIECE	49	6205 BEARING RETAINING PLATE
2	SPRING-NOSE PIECE	50	INNER HEX SCREW M5*16
3	PLASTIC WASHER	51	WOODRUFFE KEY
4	IRON WASHER	52	ECCENTRIC SHAFT
5	PIN	53	NK18/20B NEEDLE BEARING
6	LATCH BAR	54	JOINT LEVER PRESSURE COVER
7	NOISE PIECE	55	INNER HEX SCREW M8*25
8	INNER HEX SCREW M10*30	56	6201 BEARING
9	CYLINDER SLEEVE	57	INTERMEDIATE GEAR
10	INNER HEX SCREW M8*40	58	BEARING RETAINING PALTE
11	O SHAPED RING	59	6001 BEARING
12	ADJUSTING SCREW	60	SCREW M6*16
13	AULIXIARY HANDLE	61	INNER HEX SCREW M6*18
14	SUPPORT BRACKET	62	6203 BEARING RETAINING PLATE
15	HOOP	63	6203 BEARING
16	DAMPING RING	64	CAPACITOR
17	O SHAPED RING 23.5*5.2	65	ARMATURE
18	LOCATING SLEEVE	66	STATOR
19	SLEEVE-SPLIT RING	67	SCREW ST5*60
20	SPLIT RING	68	6201 BEARING
21	IRON WASHER	69	STATOR SEAT
22	DAMPING RING	70	INNER HEX SCREW M8*25
23	BIG WASHER $\Phi 68 \times \Phi 58 \times 12$	71	EXTENSION SPRING
24	CYLINDER	72	BRUSH HOLDER
25	SEAL RING	73	CARBON BRUSH
26	ALUMINIUM PISTON	74	BRUSH HOLDER CAP
27	PISTON PIN	75	BRUSH HOLDER PRESSPLATE
28	JOINT LEVER	76	SCREW ST4*18
29	INNER HEX SCREW M6*45	77	HANDLE SEAT
30	GEARCASE COVER	78	INNER HEX SCREW
31	"8" SHAPED RING	79	INNER HEX SCREW
32	BAFFLE	80	CORD SLEEVE
33	OIL BAFFLE RING	81	SCREW ST4*16
34	GEARCASE	82	SWITCH
35	OIL BAFFLE WASHER	83	SLIDE SWITCH BUTTON
36	OIL CUP	84	SCREW ST4*14
37	INNER HEX SCREW M4*14	85	DAMPING SLEEVE
38	OIL CORD	86	STEE SLEEVE
39	SQUARE PAPER WASHER	87	DAMPING HANDLE
40	IRON PLATE	88	SIDE COVER-RIGHT
41	INNER HEX SCREW M5*16	89	SIDE COVER-LEFT
42	O SHAPED RING	90	NUT M10
43	OIL HOLE	91	SCREW
44	BEARING 6302	92	POWER CORD
45	EXTERNAL RETAINING RING $\Phi 22$	93	SCREW ST4*16
46	BIG GEAR	94	CORD CLAMP
47	STEEL SLEEVE	95	SWITCH PRESSURE COVER
48	6205 BEARING		