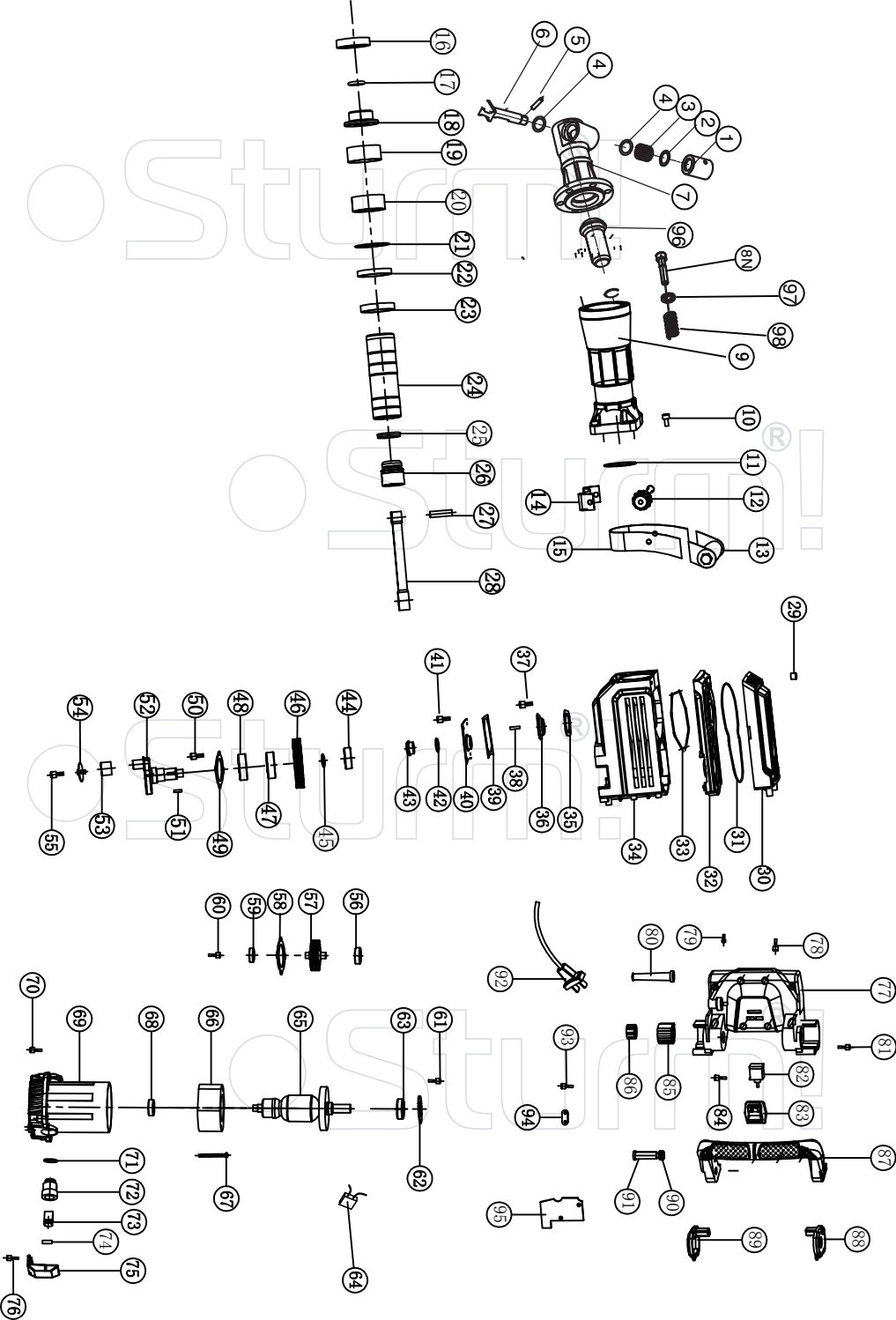


# RH2521PM



NO.	DESCRIPTION	NO.	DESCRIPTION
1	SLEEVE-NOSE PIECE	50	INNER HEX SCREW M5*16
2	SPRING RELIEF PLATE	51	WOODRUFFE KEY
3	LEVER SPRING	52	ECCENTRIC SHAFT
4	O-RING 18*8	53	NK18/20B NEEDLE BEARING
5	PIN B4*34	54	JOINT LEVER PRESSURE COVER
6	STOP LEVER	55	INNER HEX SCREW M8*25
7	FRONT COVER	56	6201 BEARING
8	INNER HEX SCREW	57	INTERMEDIATE GEAR
9	CYLINDER SLEEVE	58	BEARING RETAINING PALTE
10	INNER HEX SCREW M8*40	59	6001 BEARING
11	O SHAPED RING	60	SCREW M6*16
12	ADJUSTING SCREW	61	INNER HEX SCREW M6*18
13	AULIXIARY HANDLE	62	6203 BEARING RETAINING PLATE
14	SUPPORT BRACKET	63	6203 BEARING
15	HOOP	64	CAPACITOR
16	DAMPING RING	65	ARMATURE
17	O SHAPED RING 23.5*5.2	66	STATOR
18	LOCATING SLEEVE	67	SCREW ST5*60
19	SLEEVE-SPLIT RING	68	6201 BEARING
20	SPLIT RING	69	STATOR SEAT
21	IRON WASHER	70	INNER HEX SCREW M8*25
22	DAMPING RING	71	EXTENSION SPRING
23	BIG WASHER Ø68XØ58X12	72	BRUSH HOLDER
24	CYLINDER	73	CARBON BRUSH
25	SEAL RING	74	BRUSH HOLDER CAP
26	ALUMINIUM PISTON	75	BRUSH HOLDER PRESSPLATE
27	PISTON PIN	76	SCREW ST4*18
28	JOINT LEVER	77	HANDLE SEAT
29	INNER HEX SCREW M6*45	78	INNER HEX SCREW
30	GEARCASE COVER	79	INNER HEX SCREW
31	"8" SHAPED RING	80	CORD SLEEVE
32	BAFFLE	81	SCREW ST4*16
33	OIL BAFFLE RING	82	SWITCH
34	GEARCASE	83	SLIDE SWITCH BUTTON
35	OIL BAFFLE WASHER	84	SCREW ST4*14
36	OIL CUP	85	DAMPING SLEEVE
37	INNER HEX SCREW M4*14	86	STEE SLEEVE
38	OIL CORD	87	DAMPING HANDLE
39	SQUARE PAPER WASHER	88	SIDE COVER-RIGHT
40	IRON PLATE	89	SIDE COVER-LEFT
41	INNER HEX SCREW M5*16	90	NUT M10
42	O SHAPED RING	91	SCREW
43	OIL HOLE	92	POWER CORD
44	BEARING 6302	93	SCREW ST4*16
45	EXTERNAL RETAINING RING Ø22	94	CORD CLAMP
46	BIG GEAR	95	SWITCH PRESSURE COVER
47	STEEL SLEEVE	96	STRIKER LEVER
48	6205 BEARING	97	WASHER
49	6205 BEARING RETAINING PLATE	98	SPRING