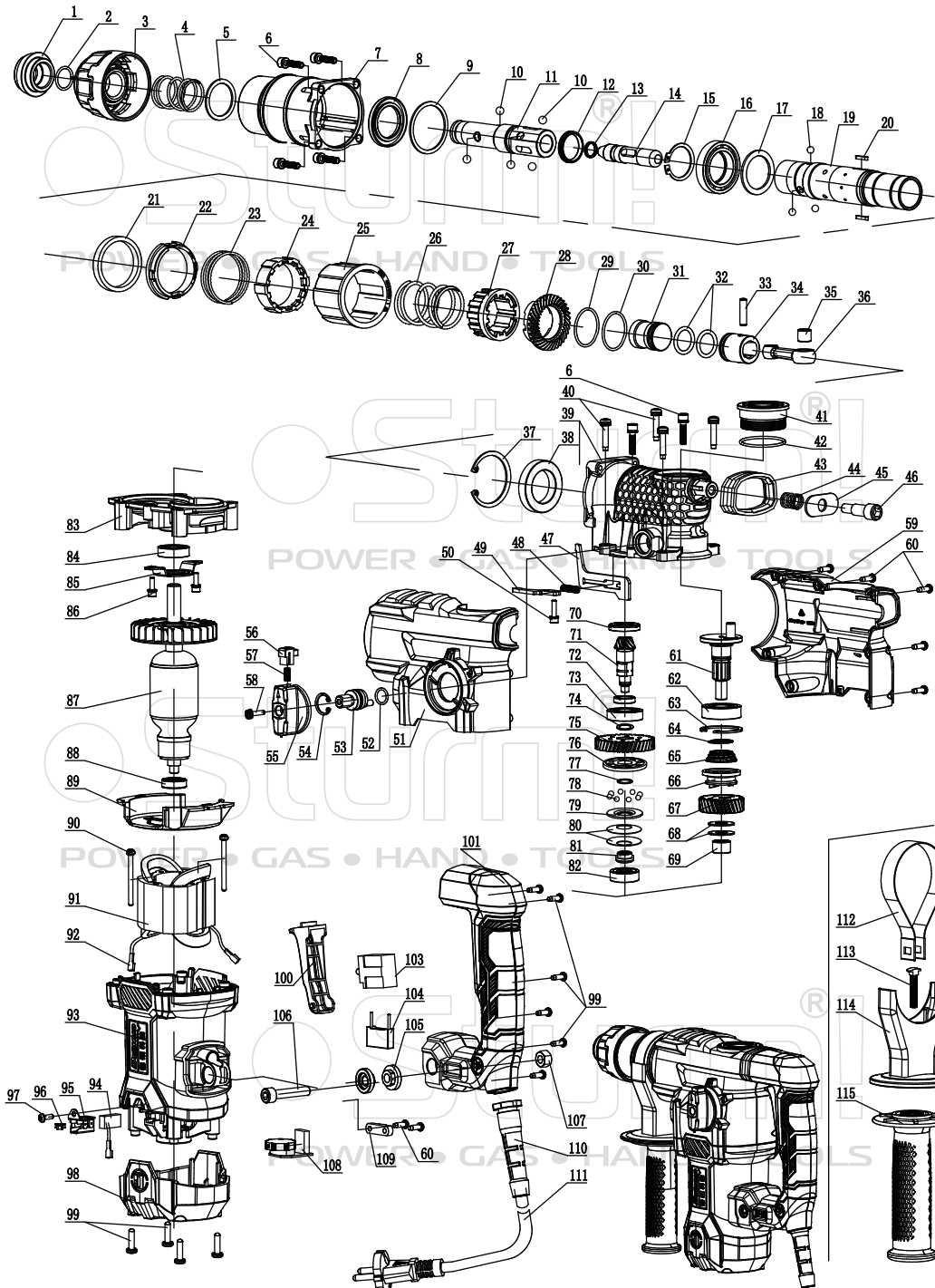


RH25320VR



NO.	DESCRIPTION	NO.	DESCRIPTION
1	RUBBER HEAD	58	SCREW M4*12
2	RING 17.5*2	59	RIGHT COVER
3	STEEL FRAME	60	SCREW ST3.9*14
4	SPRING 30.2*1.8*76	61	CRANKSHAFT
5	WASHER 29.5*37*1.5	62	BEARING 6003-RS
6	HEX.SCREW M5*22	63	RING 35
7	CYLINDER CASE	64	RING 17
8	OIL SEAL 35*45*6	65	CLUTCH SPRING
9	WASHER 47*40.5*1.5	66	CLUTCH 1
10	STEEL BALL 7.14	67	GEAR 1
11	TELEFLEX	68	WASHER 10.2*24*1
12	X-RING 20.9*2.2*4	69	STEEL SLEEVE 16*10*10
13	X-RING 13*1*4	70	OIL SEAL 19*28*4.5
14	IMPACT HAMMER	71	SMALL GEAR
15	RING 30	72	WASHER 15*19*4.7
16	BEARING 61906	73	BEARING 6002-RS
17	WASHER 30*40*2	74	WASHER 14.1*19*0.8
18	STEEL BALL 6.35	75	GEAR
19	CYLINDER	76	FIXED BOARD
20	FLAT KEY 3*3*14	77	RING 12.5*1
21	PLASTIC RANGE RING	78	STEEL 5
22	SHANK	79	MOVABLE PLATE
23	COMPRESSION SPRING	80	PLATE SPRING 14.2*9.5*3*1
24	SLIDING SLEEVE	81	SCREW M10*0.75
25	DISTANCE CIRCLE	82	BEARING 627-RS
26	SPRING 33.5*2.5*65	83	MIDDLE COVER
27	CLUTCH	84	BEARING 6001-RS
28	CYLINDER LINER TEETH	85	BEARING BOARD
29	O-RING 28*1.8	86	SCREW M4*14
30	RING 28*1.6	87	ROTOR
31	RAMMER	88	BEARING 608-RS
32	O-RING 19*3,1	89	FAN GUIDE
33	PISTON	90	SCREW ST4.8*55
34	PIN 6*23.5	91	STATOR
35	STEEL SLEEVE 12*10*8	92	INSERT SPRING
36	ROD	93	HOUSING
37	RING 47	94	CARBON BRUSH
38	BEARING 30*47*9	95	BRUSH HOLDER
39	GEAR HOUSE	96	COIL SPRING
40	SCREW BT4.8*45	97	SCREW ST3.9*10
41	OIL COVER	98	REAR COVER
42	O-RING 31.5*2	99	SCREW ST3.9*16
43	DAMPING SLEEVE	100	SWITCH BUTTON
44	SPRING 10.5*1.8*27	101	HANDLE
45	DAMPING PLATE	103	SWITCH
46	SCREW M8*32	104	CAPACITANCE
47	BOARD	105	BACK DAMPING RING
48	SPRING YL30	106	SCREW M8*40
49	PLATE	107	SCREW M8
50	SCREW M5*16	108	SPEED SWITCH
51	GEAR BOX LEFT COVER	109	CABLE BOARD
52	O-RING 12.4*1.8	110	CABLE SHEATH
53	KNOB SHAFT	111	CABLE
54	RING 18	112	HOOP
55	FUNCTION KNOB	113	T-SCREW M8*50
56	KNOB	114	BRACKET
57	SPRING 0.6*4.5*17.5	115	AUXILIARY HANDLE