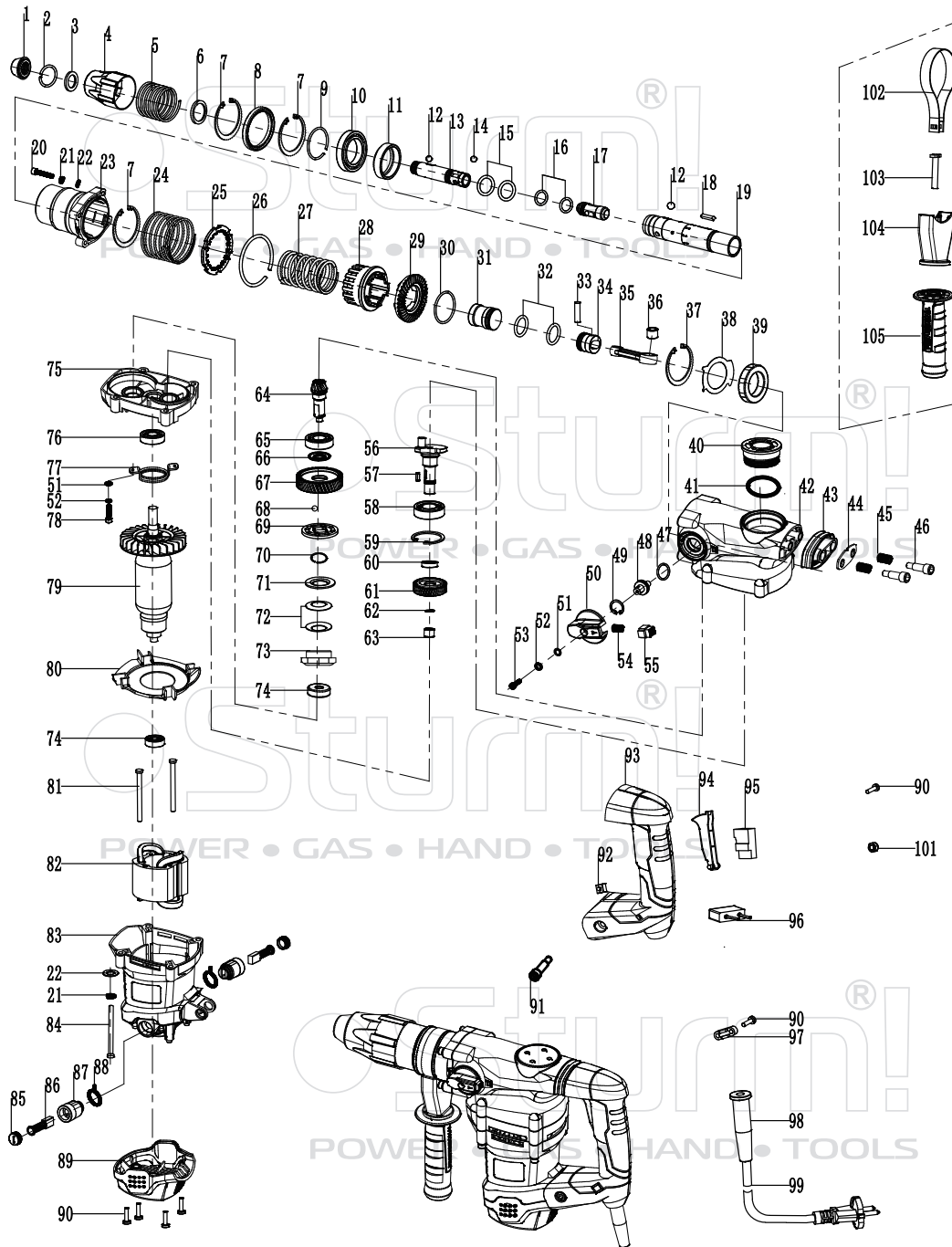


# RH2540MV



NO.	DESCRIPTION	NO.	DESCRIPTION
1	RUBBER HEAD	54	SPRING 0.6*4.5*17.5
2	STEEL RING 23.5X2	55	LOCKING BUTTON
3	WASHER 38.5*26.2*4	56	CRANK
4	SLIDER	57	FLAT PIN 4*4*12
5	SLIDER SPRING 32*1.8*60	58	BEARING 6204
6	WASHER 30.5*40.5*1.5	59	CRICLIP 47
7	CRICLIP 55	60	DISTANCE RING 17.1*26*7
8	SEAL RING 35*55*8	61	THE FIRST GEAR
9	STEEL RING 31.5*1.6	62	CIRCLIP 17
10	BEARING 6907	63	NEEDLE BEARING HK14/16
11	PLASTIC RING	64	CONE SHAFT
12	STEEL BALL $\Phi$ 7.94	65	BEARING 6002
13	TELEFLEX	66	WASHER 14.1*19*0.5
14	STEEL BALL $\Phi$ 7.14	67	BIG GEAR
15	O-RING 24*2.2	68	STEEL BALL $\Phi$ 5
16	O-RING 15*2	69	FIXED PLATE
17	IMPACT HAMMER	70	STEEL RING 12.5*1
18	FLAT KEY 3*3*18	71	ACTIVE PLATE
19	CYLINDER	72	DISC SPRING
20	SCREW M6*30	73	LOCKING NUT M10*0.75
21	SPRING WASHER 6	74	BEARING 628
22	PLAIN WASHER 6	75	MIDDLE COVER
23	CYLINDER HOUSE	76	BEARING 6001
24	SPRING 50.8*1.6*50	77	BEARING PRESS BOARD
25	WASHER	78	SCREW M4X14
26	STEEL RING 60X2	79	ROTOR
27	SPRING	80	WIND GUIDE
28	CLUTCH	81	SCREWST4.8X60
29	BIG CONE GEAR	82	STATOR
30	O-RING 28X1.8	83	HOUSING
31	RAMMER	84	SCREWM6*60
32	O-RING 22X3	85	BRUSH COVER
33	PISTON PIN 8*27	86	CARBON BRUSH
34	PISTON 28*26	87	BRUSH HOLDER
35	CONNECT ROD	88	COIL SPRING
36	NEEDLE BEARING HK1210	89	REAR COVER
37	CIRCLIP 50	90	TAPPING SCREW ST3.9C16
38	ANTI-OIL BOARD	91	SCREWM8X45
39	BUSH	92	POWER INDICATOR LIGHT
40	OIL COVER	93	HANDLE
41	O-RING 31.5*2	94	SWITCH TRIGGER
42	GEAR BOX	95	POWER SWITCH
43	ANTI-VIBRATION HOLDER	96	CAPACITOR
44	ANTI-VIBRATION BOARD	97	CABLE CLAMP
45	ANTI-VIBRATION SPRING	98	CABLE SLEEVE
46	ANTI-VIBRATION SCREW	99	CABLE
47	O-RING 175*2	101	NUT M8
48	DIAL TWIST	102	HOOP
49	CIRCLIP 21	103	T-BOLT M8X50
50	TWO FUNCTION KNOB	104	BRACKET
51	SPRING WASHER 4	105	AUXILIARY HANDLE
52	PLAIN WASHER 4		
53	SCREW M4*12		