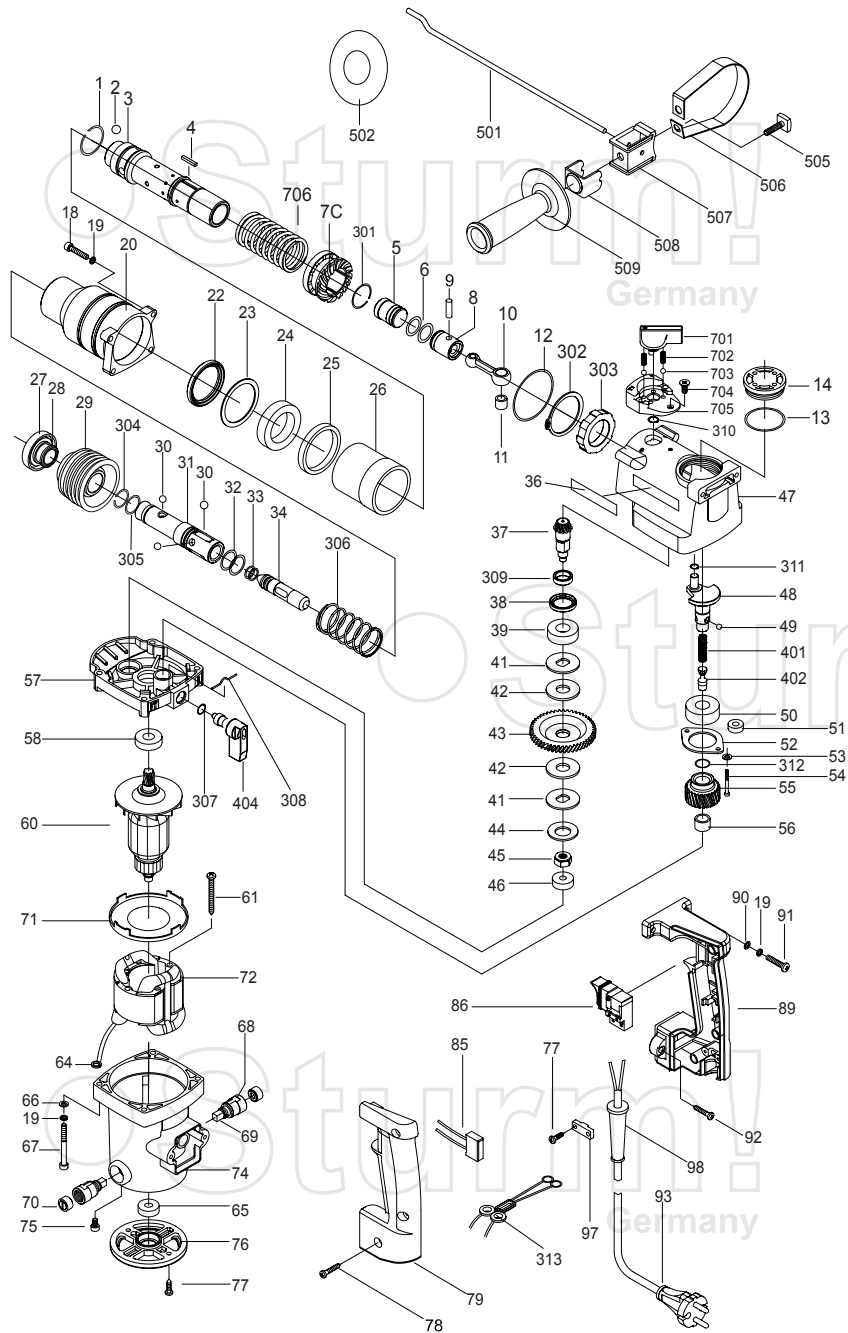


# RH2565



NO.	DESCRIPTION	NO.	DESCRIPTION	NO.	DESCRIPTION
1	STEEL RING	43	SECOND GEAR	90	WASHER Ø 5
2	STEEL BALL Ø 7.94	44	SPRING	91	SCREW M5X25
3	CYLINDER	45	SPECIALITY NUT	92	SCREW ST4.2X20
4	FLAT PIN 3X18	46	BEARING 627Z	93	CABLE & PLUG
5	STRIKER	47	CRANK SHAFT HOUSING	97	CORD CLAMP
6	O-RING	48	CRANK SHAFT	98	CORD SHEATH
7C	BIG BEVEL GEAR	49	STEEL BALL Ø 5.5	301	SHIM
8	PISTON	50	BEARING 6202Z	302	CIRCLIP Ø 47
9	PISTON PIN	51	ISOLATION RING	303	OIL BEARING
10	CONNECTING ROD	52	GRIP	304	STEEL RING
11	NEEDLE BEARING HK0810	53	SPRING WASHER Ø 4	305	WASHER
12	O-RING	54	BOLT M4	306	SPRING
13	O-RING	55	FIRST GEAR	307	O-RING
14	OIL COVER	56	NEEDLE BEARING HK1210	308	RETAINER
18	HEX SCREW M5X20	57	GEAR HOUSING	309	SEAL FERRULE
19	WASHER Ø 5	58	BEARING 6001Z	310	CIRCLIP
20	CYLINDER HOUSING	60	ROTOR	311	CIRCLIP Ø 8
22	SEAL	61	SCREW ST4.8X50	312	CIRCLIP
23	WASHER	64	WIRE-LEAD SPRING	313	INDUCTANCE
24	BALL BEARING 61907	65	BEARING 608Z	401	SPRING
25	PLASTIC RING	66	WASHER Ø 5	402	LIFTING PILLAR
26	PLASTIC BUSHING	67	SCREW M5X50	404	HAMMER STOP SELECTOR KNOB
27	FRONT CAP	68	BRUSH HOLDER ASSEMBLY	501	DEPTH ROD
28	O-RING	69	BRUSH SET	502	DUST CAP
29	SLEEVE	70	BRUSH CAP	505	BOLT
30	STEEL BALL Ø 7.14	71	AIR BAFFLE RING	506	CLAMPING BAND
31	RETAINER SLEEVE	72	STATOR	507	CLAMP HOLDER
32	O-RING	74	MOTOR HOUSING	508	DEPTH ROD HOLDER
33	O-RING	75	SCREW M5X50	509	AUXILIARY HANDLE
34	SECOND STRIKER	76	BOTTOM COVER	701	DRILL STOP SELECTOR KNOB
36	BRAND LABEL	77	SCREW ST4.2X16	702	SPRING
37	THIRD SHAFT-GEAR	78	TAP BOLT ST42X25	703	STEEL BALL Ø 5
38	OIL SEAL	79	HANDLE COVER	704	SCREW M4X10
39	BEARING 6001Z	85	CAPACITANCE	705	SELECTOR HOLDER
41	RETAINER	86	SWITCH	706	SPRING
42	CLUTCH ATTRITION FLAKE	89	HANDLE		