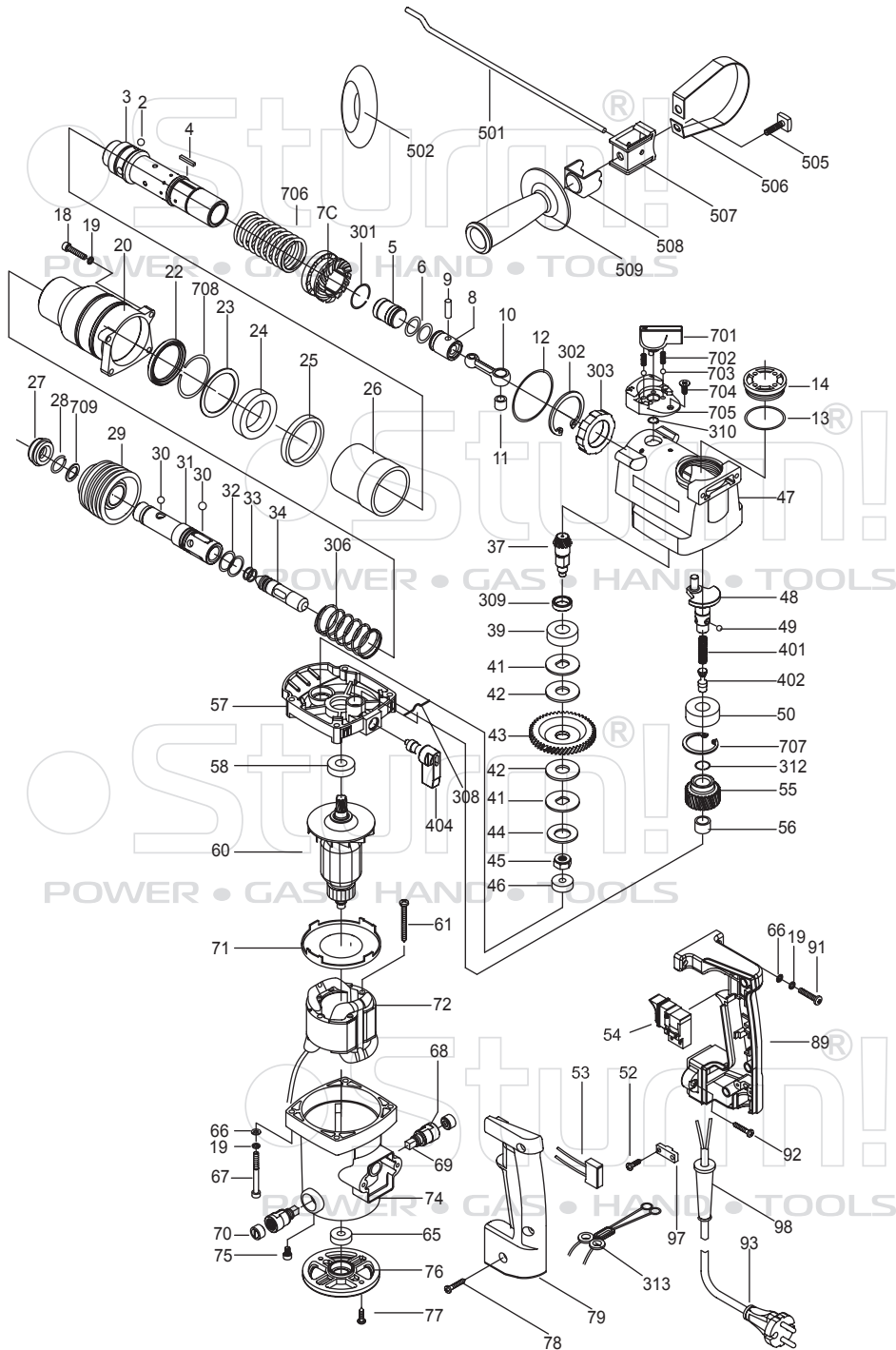


# RH2565



| NO. | DESCRIPTION           | NO. | DESCRIPTION         |
|-----|-----------------------|-----|---------------------|
| 2   | STEEL BALL Ø7.94MM    | 61  | TOP BOLT            |
| 3   | CYLINDER              | 65  | BEARING 608         |
| 4   | PIN                   | 66  | PLAIN WASHER        |
| 5   | RAM                   | 67  | BOLT                |
| 6   | O-RING                | 68  | BRUSH HOLDER        |
| 7C  | BIG BEVEL GEAR        | 69  | CARBON BRUSH        |
| 8   | PISTON                | 70  | BRUSH CAP           |
| 9   | PISTON PIN            | 71  | AIR BAFFLE          |
| 10  | CONNECTING ROD        | 72  | STATOR              |
| 11  | NEEDLE BEARING HK0810 | 74  | MOTOR HOUSING       |
| 12  | O-RING                | 75  | BOLT                |
| 13  | O-RING                | 76  | BOTTOM COVER        |
| 14  | OIL COVER             | 77  | TAP BOLT            |
| 18  | BOLT                  | 78  | TAP BOLT            |
| 19  | SPRING WASHER         | 79  | LEFT HANDLE         |
| 20  | CYLINDER CASE         | 89  | RIGHT HANDLE        |
| 22  | OIL SEAL              | 91  | BOLT                |
| 23  | WASHER                | 92  | TAP BOLT            |
| 24  | BEARING 61907         | 93  | POWER CORD          |
| 25  | RUBBER RING           | 97  | CORD CLAMP          |
| 26  | DUCT                  | 98  | CORD SHEATH         |
| 27  | FRONT COVER           | 301 | LOCKING SPRING      |
| 28  | AXILE RETAINER RING   | 302 | CIRCLIP             |
| 29  | SLIDER                | 303 | OILY BEARING        |
| 30  | STEEL BALL            | 306 | SPRING              |
| 31  | GUARD RING SLEEVE     | 308 | LOCK SPRING         |
| 32  | O-RING A              | 309 | OIL SEAL FERRULE    |
| 33  | O-RING B              | 310 | O-RING              |
| 34  | SECOND STRIKER        | 312 | AXILE RETAINER RING |
| 37  | THIRD SHAFT GEAR      | 313 | INDUCTANCE          |
| 39  | BEARING 6002          | 401 | SPRING              |
| 41  | SHEATH PLATE          | 402 | CLUTCH SHAFT        |
| 42  | CLUTCH FRICTION PLATE | 404 | SWITCH GRIP         |
| 43  | SECOND GEAR           | 501 | DEPTH GAUGE         |
| 44  | DISH SPRING           | 502 | DUST CAP            |
| 45  | SPECIAL NUT           | 505 | SCREW               |
| 46  | BEARING 627           | 506 | LOCKING RING        |
| 47  | CRANK SHAFT CASE      | 507 | HANDLE LOCK         |
| 48  | CRANK SHAFT           | 508 | DEPTH GAUGE LOCK    |
| 49  | STEEL BALL            | 509 | SIDE HANDLE         |
| 50  | BEARING 6202z         | 701 | SWITCH GRIP         |
| 52  | SCREW                 | 702 | SPRING              |
| 53  | CAPACITOR             | 703 | STEEL BALL          |
| 54  | SWITCH                | 704 | BOLT                |
| 55  | FIRST GEAR            | 705 | MOUNT               |
| 56  | NEEDLE BEARING HK1210 | 706 | SPRING              |
| 57  | GEAR CASE             | 707 | CIRCLIP             |
| 58  | BEARING 6001          | 708 | AXILE CIRCLIP       |
| 60  | ROTOR                 | 709 | WASHER              |