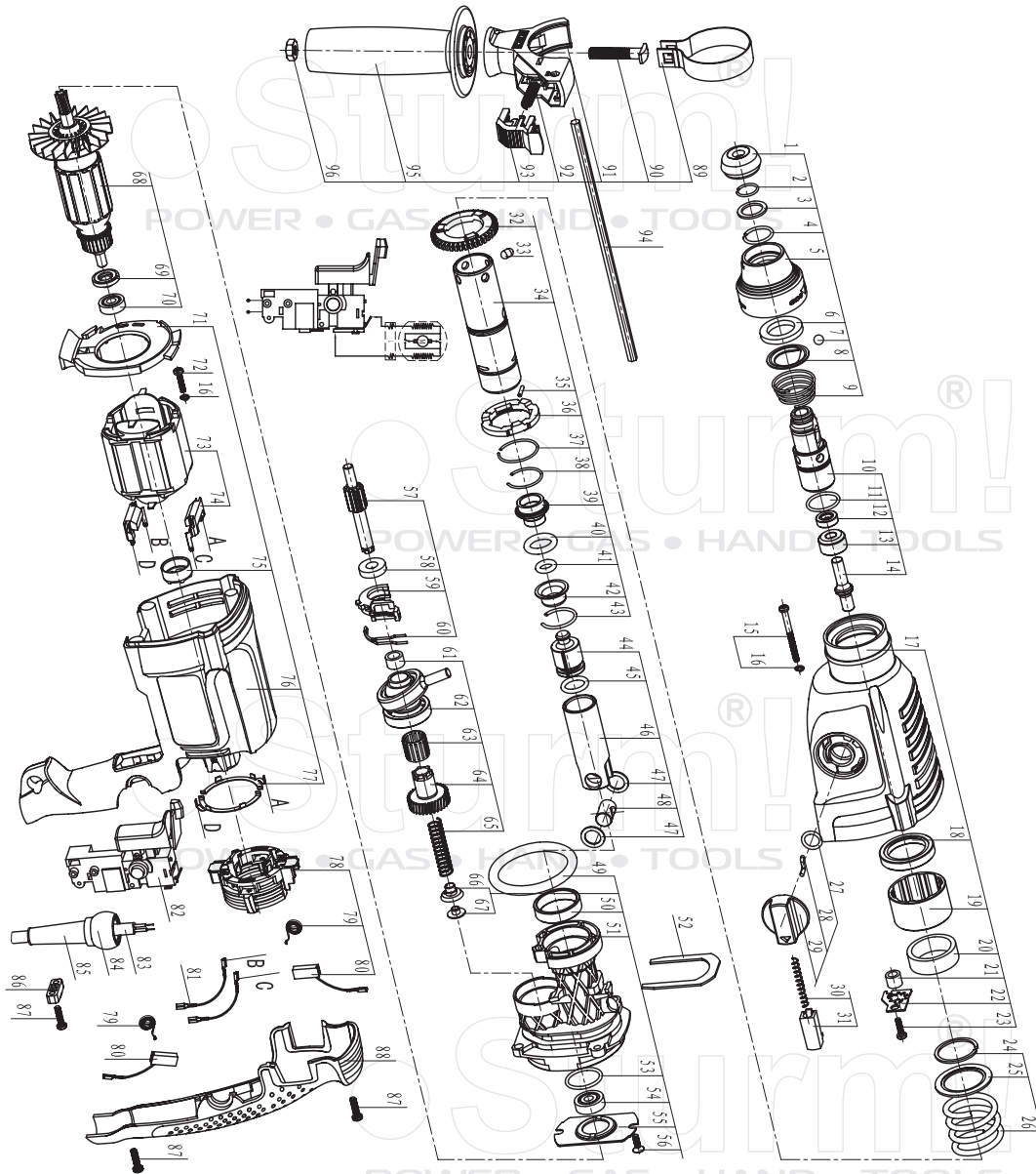


RH2592P



NO.	DESCRIPTION	NO.	DESCRIPTION
1	DUST CAP	49	O-RING
2	SNAP RING	50	HOLDER BUSHING
3	WASHER	51	HOLDER
4	SNAP RING	52	PRESS FORK
5	LOCKING SLEEVE	53	O-RING
6	THICK WASHER	54	BEARING 609Z
7	STEEL BALL	55	BEARING PRESS PLATE
8	WASHER	56	SCREW
9	SPRING	57	GEAR SHAFT
10	DRILL BIT COVER	58	BEARING 699Z
11	O-RING	59	MODEL SELECTOR FORK
12	OIL SEAL	60	FORK SPRING
13	THRUST RING	61	NEEDLE ROLLER BEARING HK0908
14	STRIKER SHAFT	62	ROCKER BEARING
15	SCREW	63	NEEDLE ROLLER BEARING K15
16	SPRING WASHER	64	GEAR
17	FRONT HOUSING	65	SPRING
18	OIL SEA	66	SPRING HOLDER
19	BUSHING	67	POSITION WASHER
20	NEEDLE ROLLER BEARING HK3012	68	ROTOR
21	NEEDLE ROLLER BEARING HK0709	69	INSULATION WASHER
22	NINE TEETH WASHER	70	BEARING 607Z
23	SCREW	71	WIND GUIDE
24	FLAT SNAP RING	72	SCREW
25	WASHER	73	STATOR
26	SPRING	74	INDUCTOR
27	O-RING	75	BEARING BUSH
28	MODEL SELECTOR POLE	76	HOUSING
29	MODEL SELECTOR	77	SWITCH CONTACT
30	SPRING	78	CARBON BRUSH HOLDER
31	LOCKING BUTTON	79	SPRING
32	BIG GEARING	80	CARBON BRUSH
33	POSITION PIN	81	INTERNAL CORD
34	CONNECT PIPE	82	SWITCH
35	PIN	83	CORD & PLUG
36	CLUTCH DISK	84	CORD SLEEVE COVER
37	SNAP RING	85	CORD SLEEVE
38	SNAP RING	86	CORD CLAMP
39	GUIDE BUSH	87	SCREW
40	O-RING	88	BACK COVER
41	O-RING	89	CLAMPING BAND
42	HOLDING JACKET	90	T SCREW
43	SNAP RING	91	SUPPORT CLAMP
44	PISTON	92	LOCKING BUTTON SPRING
45	PISTON O-RING	93	LOCKING BUTTON
46	CYLINDER	94	DEPTH GAUGE
47	CYLINDER PIN WASHER	95	AUXILIARY HANDLE
48	CYLINDER PIN	96	NUT