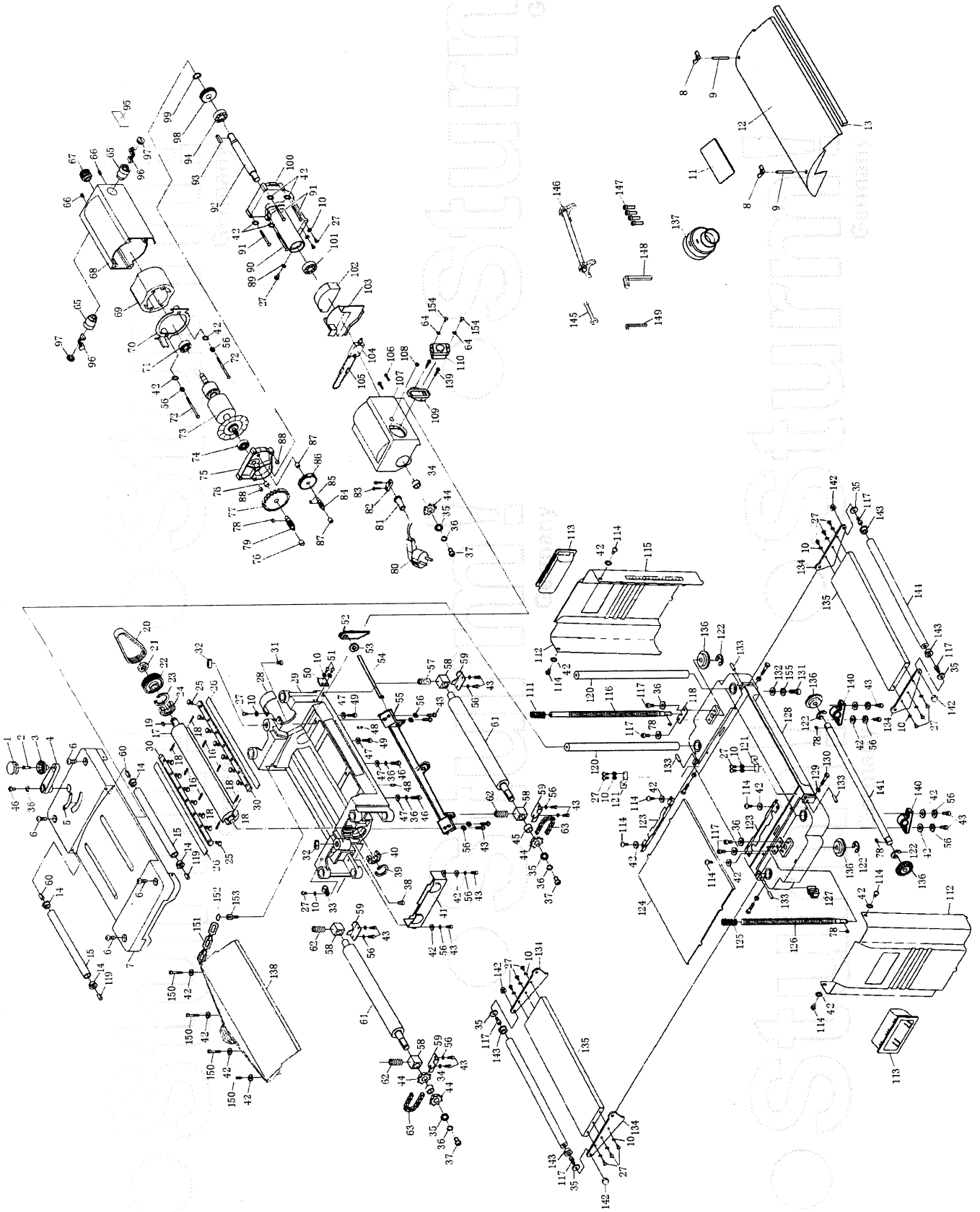


STURM
Germany



STURM
Germany

TH14203

NO.	DESCRIPTION	NO.	DESCRIPTION
1	CRANK HANDLE COVER(UPPER)	39	RETAINING RING
2	SCREW	40	BEARING 6203-2RZ
3	CRANK HANDLE COVER(LOWER)	41	SPROCKET GUARD
4	CRANK	42	WASHER
5	DOWN / UP LABEL	43	HEXAGON SOCKET SCREW
6	HEXAGON SOCKET SCREW	44	SPROCKET
7	COPING	45	BUSH B
8	WING NUT	46	HEXAGON SOCKET SCREW
9	SCREW	47	WASHER
10	WASHER	48	PIN FOR LOCATION
11	SAFETY COVER WARNING LABEL	49	TAPPING SCREW
12	DUST HOOD	50	POINTER
13	SPONGE BAR	51	SCREW
14	PIN TUBE A	52	KICK-BACK
15	PIPE A	53	WASHER
16	PIN	54	SPINDLE
17	BLADE SHAFT	55	KICK-BACK HOLDER
18	SPRING FOR BLADE SHAFT	56	SPRING WASHER
19	KEY	57	SPRING A
20	DRIVING BELT	58	BUSH
21	NUT	59	IMPACTION PLATE
22	WHEEL	60	PIN A
23	RETAINING RING	61	ROLLER
24	BEARING, 6202-2RZ	62	SPRING B
25	HEXAGON SCREW	63	CHAIN BELT
26	BLADE	64	WASHER
27	SCREW	65	BRUSH HOLDER
28	FIX PLATE	66	HEXAGON SOCKET SCREW
29	MAIN UNIT HOLD	67	DRIVING WHEEL
30	IMPACTION BAR FOR BLADE	68	MOTOR HOUSING
31	ADJUST SLEEVE A	69	STATOR
32	NUT	70	BREAK WIND PLATE
33	CORD CLAMP A	71	BEARING 6200-2Z
34	BUSHING A	72	SCREW
35	WASHER	73	ROTOR
36	SPRING WASHER	74	BEARING 6002-2Z
37	SCREW	75	GEAR BOX COVER
38	ADJUST SLEEVE B	76	BUSHING

RU60508-1

TH14203

NO.	DESCRIPTION	NO.	DESCRIPTION
77	GEAR A	117	HEXAGON SOCKET SCREW
78	KEY	118	PLATE
79	GEAR SHAFT A	119	PIN B
80	POWER CORD	120	PIPE
81	PROTECTION TUBE	121	SPRING PLATE
82	CORD CLAMP B	122	RETAINING RING
83	TAPPING SCREW	123	ORIENTED PLATE
84	GEAR SHAFT B	124	WORK TABLE
85	KEY	125	SPRING B
86	GEAR B	126	ADJUSTABLE SCREW B
87	BUSHING	127	FOOT
88	BUSHING	128	BASE
89	TOOTH WASHER	129	HEX NUT
90	TAPPING SCREW	130	BOLT
91	TAPPING SCREW	131	HEXAGON SOCKET SCREW
92	SHAFT	132	WASHER
93	KEY	133	SPRING PIN
94	BEARING 6202	134	CONNECT PLATE
95	BRAND & RATING LABEL	135	EXTENSION TABLE
96	CARBON BRUSH	136	ANGLE GEAR
97	BRUSH CAP	137	DUST CHUTE ADAPTER(100MM OUTLET)
98	GEAR C	138	DUST CHUTE
99	RETAINING RING	139	TAPPING SCREW
100	GEAR BOX	140	PRESSING COVER
101	BEARING 6002	141	DRIVE POLE
102	SPONGE PADDING	142	SCREW CAP
103	DUST PROOF COVER	143	PIN TUBE B
104	PROTECTOR	144	PIPE B
105	CONTACT PLATE	145	WRENCH 8MM
106	TAPPING SCREW	146	KNIFE TRANSFER TOOL
107	SWITCH PROTECTOR COVER	147	HEXAGON SOCKET SCREW(FOR LOCK BASE)
108	HEX NUT	148	HEX WRENCH 5MM
109	SWITCH FIX PLATE	149	HEX WRENCH 4MM
110	SWITCH	150	HEXAGON SOCKET SCREW(FOR LOCK DUST CHUTE)
111	SPRING A	151	CHAIN
112	SIDE BOARD	152	RING
113	HANDGRIP	153	SCREW
114	SCREW	154	TAPPING SCREW
115	DEPTH SCALE LABEL	155	SPRING WASHER
116	ADJUSTABLE SCREW A		

RU60508-1